

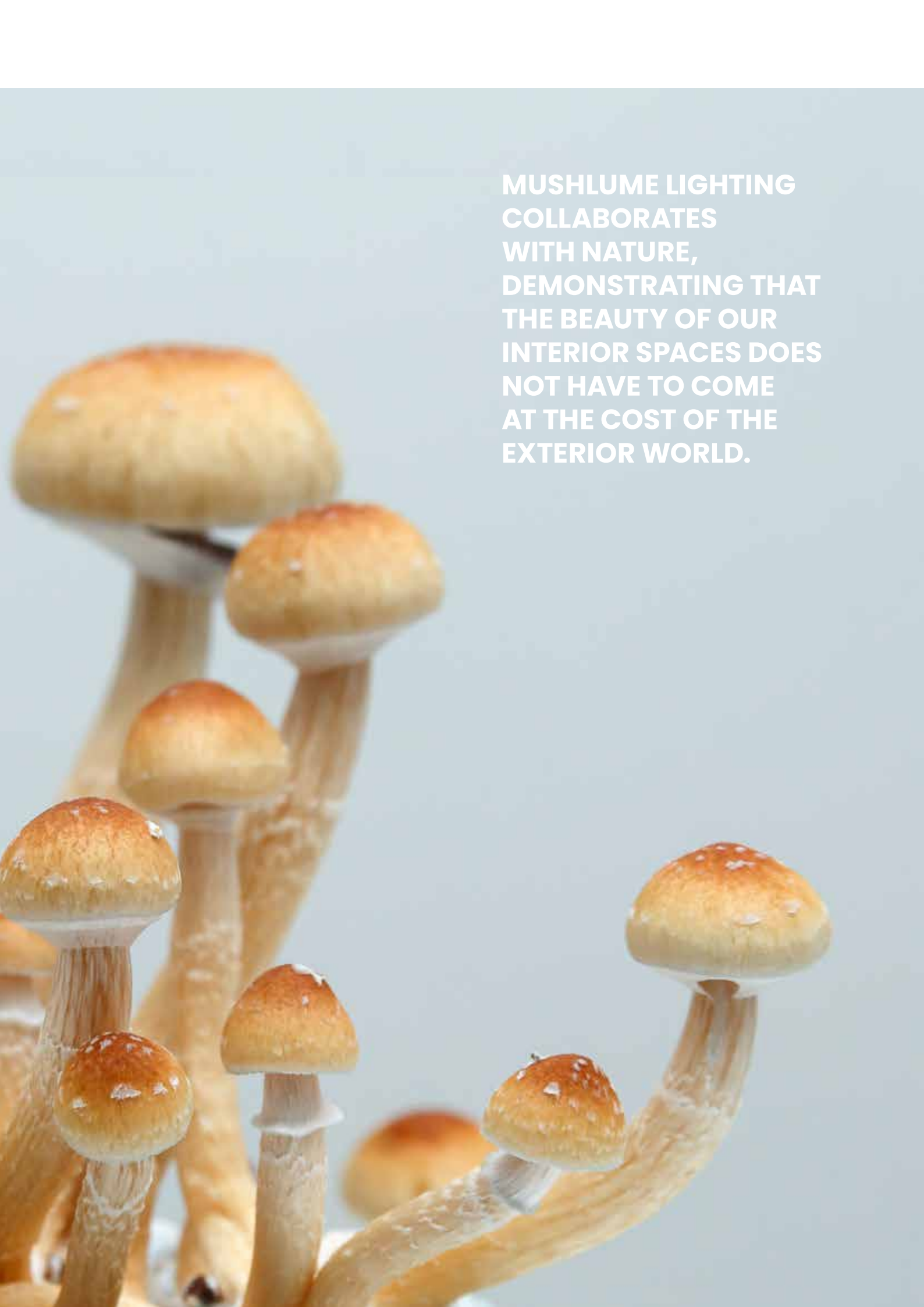
# MushLume Lighting

**PRODUCT CATALOG**

EUROPE | 2023





A cluster of small, light brown mushrooms with gills, growing on a wooden surface against a light blue background. The mushrooms are of various sizes and are arranged in a group, with some in the foreground and others in the background. The lighting is soft and even, highlighting the texture of the mushroom caps and stems.

**MUSHLUME LIGHTING  
COLLABORATES  
WITH NATURE,  
DEMONSTRATING THAT  
THE BEAUTY OF OUR  
INTERIOR SPACES DOES  
NOT HAVE TO COME  
AT THE COST OF THE  
EXTERIOR WORLD.**



## **GROWN, NOT MANUFACTURED.**

MushLume is an award-winning biofabricated lighting collection that is GROWN, not manufactured, from mycelium—the roots of mushrooms.



The lampshades are grown utilizing a sustainable crop—hemp—that is combined with a rapidly renewable living organism—mycelium. In just a few days, the mycelium grows, cultivating a thick network of hyphae that binds to the hemp substrate, solidifying into a solid structure within the custom lampshade molds. After the mycelium has fully matured, the lampshades are demolded, dried and heated, creating a stable, inert and 100% biodegradable product.



## **MYCELIUM**

The vegetative part of a fungus, better known as the roots of mushrooms, grows beneath our feet in a vast, interconnected network of hyphae. This incredible organism is truly one of nature's greatest wonders. Responsible for distributing water and nutrients between the flora in our forests, mycelium is not only a circulator of vital resources in an ecosystem, but is a connector of information. This communication super highway helps to foster resilience amongst plants as well as animals, strengthening the whole through a communal network of resources.









## BIOFABRICATION

Working with a living organism to co-create products and production processes that meet a higher level of sustainability than traditional materials and manufacturing techniques.

With over 15 years of research and development, this biomaterial is no longer at an experimental phase. We've proven that biofabricated products are not only a viable consumer good, but at scale, can help to shift an industry into a more resilient and symbiotic future.

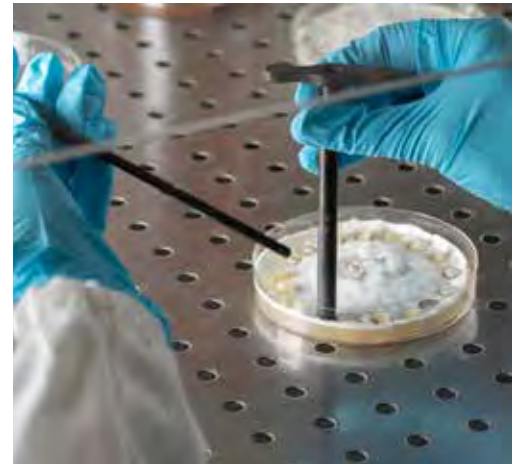
The award-winning MushLume Lighting Collection is one of the first successfully commercialized biofabricated products made available in the global market. And the first mycelium-grown lighting collection to be launched within the lighting industry. Our story and products continue to inspire entrepreneurs and designers across the globe to begin their own mycelium journeys. As more and more biodesign companies and biofabricated products emerge on the scene the greater validation and momentum the biodesign movement garners.

## GOOD FOR PEOPLE & PLANET

By tapping into a unique material science that uses mushroom mycelium, we can begin to reimagine a more sustainable future, one in which natural resources are not extracted from nature, but rather are grown in a lab. And where production processes require very little energy or water. Most importantly, when the product is at the end of its lifecycle, it can safely return to the Earth adding nutrients back to the soil rather than lasting for hundreds of years or releasing toxins.







## **RAPIDLY RENEWABLE RESOURCES**

Mycelium has an exponential growth rate, taking days to weeks to fully colonize, while hemp is one of the fastest growing fiber plants, maturing in only 60-90 days. Compare these growth cycles to other conventional raw materials like wood (20-30 years) or cotton-based fibers (130-160 days) and the difference is dramatic!



## **BIODEGRADABLE & NON-TOXIC**

Rated home-compostable at the end of its life, the lampshades can safely biodegrade in your backyard compost, adding nutrients to the soil rather than pollutants. Indoor air quality is a growing concern for human health given we spend 70-90% of our time indoors. The lampshades are all natural! That means no off-gassing of harmful toxins into the air.

## **SUSTAINABLY SOURCED MATERIALS**

Our mycelium is grown in a lab, not extracted from nature. For our substrate, we use a part of the plant that is a byproduct of the hemp industry. Hemp requires significantly less land and water to grow compared to other natural fiber plants and sequesters carbon dioxide into the soil. That's a huge win for Mother Nature!



## **MINIMAL WATER & ENERGY USE**

Hemp requires about half as much water as other fiber crops, while mycelium requires very little water. No additional electrical energy is needed during the mycelium growing process, the lampshades are grown using only the power of Nature!



**WHAT WE DO, WHAT WE  
MAKE HAS AN IMMENSE  
RIPPLE EFFECT NOT ONLY IN  
OUR LOCAL COMMUNITIES,  
BUT FOR THE ENTIRE  
INTERCONNECTED  
ECOSYSTEM HERE ON EARTH.  
AS A PRODUCER OF GOODS,  
WE TAKE OUR ROLE VERY  
SERIOUSLY.**

**WE ARE RESPONSIBLE FOR  
CREATING PRODUCTS THAT...**





**\* DO NOT POISON PEOPLE OR PLANET**

**\* ARE NOT RELIANT ON FOSSIL FUELS**

**\* and DO NOT EXTRACT AND USE FINITE  
RESOURCES OR CAUSE ECOSYSTEM  
DESTRUCTION**

**THIS IS OUR PROMISE.**



PROD





UCTS



## MushLume Hemi Pendant

### Suspended Elegance

Our most popular fixture, the MushLume Hemi Pendant is all about pushing interior lighting to the limits with our largest diameter dome structure made from natural, sustainable and biodegradable mushroom material. It's a sizable representation of the adaptability of this dynamic material and quite the statement piece for any eco-conscious space.



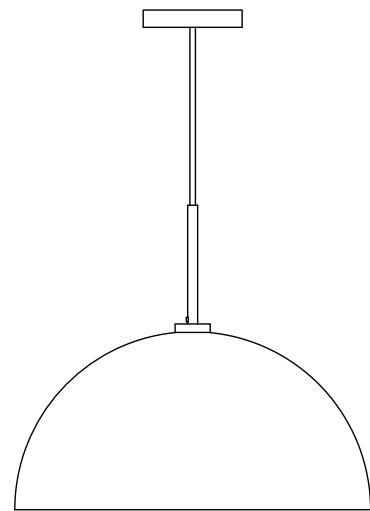
## Sizes

---

**Large** 58.5L x 58.5W x 30.5H cm

**Medium** 44.5L x 44.5W x 23H cm

**Small** 30.5L x 30.5W x 15H cm



## Features

- Metal hardware & cloth cord available in matte black, matte white, brushed bronze, and brushed titanium
- Available in hardwired ceiling mount or plug-in with swag ceiling hook
- Bulb included: Tala 6W Globe 240V bulb
- For indoor use only. UL & CE certified
- Standard cord length: 2m. Cut to size. Custom lengths available





## MushLume Cup Light Pendant

### Small, but mighty

The MushLume Cup Light is our smallest hanging lamp in the collection, yet large enough to show off the unique texture created by our sustainably grown mushroom mycelium material. These pendants look stunning in a series or lighting cloud!

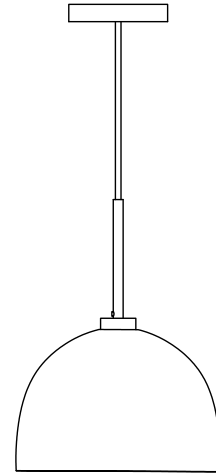




## Size

---

23.5 x 23.5 x 17.8H cm



## Features

- Metal hardware & cloth cord available in matte black, matte white, brushed bronze, and brushed titanium
- Available in hardwired ceiling mount or plug-in with swag ceiling hook
- Bulb included: Tala 6W Globe 240V bulb
- For indoor use only. UL & CE certified
- Standard cord length: 2m. Cut to size. Custom lengths available









## MushLume Hemi Sconce

### Functional Art

The flush mount sconce series brings our iconic pendant shade shapes into a new category of interior applications. Line your hallway, illuminate your bathroom, or combine them in an original configuration to create an art installation on an entry wall. Whatever you desire, there's a shade size and shape to meet your aesthetic choice.

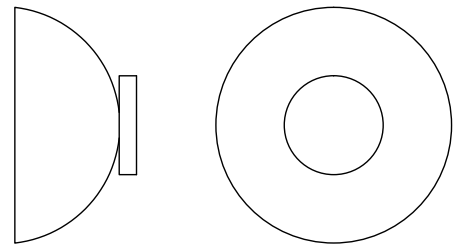


## Sizes

---

**Medium** 44.5L x 24.8D x 44.5H cm

**Small** 30.5L x 17.2D x 30.5H cm



## Features

- Metal hardware available in matte black, matte white, brushed bronze, and brushed titanium
- Available in hardwired wall mount or plug-in with toggle switch
- For indoor use only. UL & CE certified
- Bulb included: Tala 6W Globe 240V bulb
- Tala bulb uses "dim to warm," flicker-free technology (dimmer not included)

# MushLume Cup Light Sconce

## Simply Stunning

The flush mount sconce series brings our iconic pendant shade shapes into a new category of interior applications. Line your hallway, illuminate your bathroom, or combine them in an original configuration to create an art installation on an entry wall. Whatever you desire, there's a shade size and shape to meet your aesthetic choice.



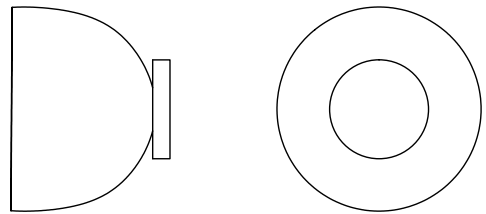


## Sizes

---

**Large** 23.5L x 20D x 23.5H cm

**Small** 18.4L x 15D x 18.4H cm



## Features

- Metal hardware available in matte black, matte white, brushed bronze, and brushed titanium
- Available in hardwired wall mount or plug-in with toggle switch
- For indoor use only. UL & CE certified
- Bulb included: Tala 6W Globe 240V bulb
- Tala bulb uses "dim to warm," flicker-free technology (dimmer not included)



A close-up photograph of a textured wall, possibly made of stone or concrete, with a light-colored circular object (possibly a light fixture) on the left side. The wall has a rough, uneven texture with visible cracks and crevices. The lighting is soft and even, highlighting the texture of the wall.

**GOING BEYOND  
SPECULATIVE  
DESIGN, WE DELIVER  
TANGIBLE PRODUCTS  
THAT INFLUENCE  
BOTH INDUSTRY  
AND CONSUMER  
BEHAVIOR.**



PROJU





FEETS

# 01.

## WESTLEY HOTEL

Location : Calgary, Canada

Year : 2021

Client : Frank Architecture

Lighting Featured : Hemi Large Pendants  
Hemi Medium Pendants  
Hemi Small Pendants



Image : Hilton Tapestry Group



As the former headquarters of a Calgary energy corporation, the soul of the Westley Hotel building evokes the energy of Calgary's wild west roots, and the name is an homage to being the first Hilton Tapestry Collection hotel in Western Canada. Working closely with FRANK Architecture & the hotel's ownership, MushLume Lighting created a subtle, yet striking custom configuration of mycelium-grown lampshades that would greet and engage each guest in the hotel's main lobby.

**WESTLEY HOTEL**





Images : Hilton Tapestry Group & Mani Singh Photography



# 02.

## 1 HOTEL BROOKLYN BRIDGE

Location : Brooklyn, NY | USA

Year : 2017

Client : Starwood Capital Group

Lighting Featured : Hemi Large Pendants

Hemi Medium Pendants

Hemi Small Pendants

Cup Light Pendants

Cup Light Table Lamps

Cup Light Floor Lamp



Image : Starwood Capital Group

A cloud of lampshades grown from mushroom mycelium, each varying in size and height span the ceiling of the Riverhouse suite in the 1 Hotel Brooklyn Bridge. The sustainable material's soft texture and glow gracefully communicates the shared ethos of both MushLume Lighting and 1 Hotels, a luxury lifestyle hotel brand inspired by nature that cultivates the best of eco-conscious design and sustainable architecture.



Images : Starwood Capital Group





## **1 HOTEL BROOKLYN BRIDGE**

Two Cup Light Table Lamps illuminate the communal work/gather table in the lobby of the 1 Hotel Brooklyn Bridge.

# 03.

Images : Blue Park Kitchen





## BLUE PARK KITCHEN

Location : Lower & Midtown Manhattan, NYC | USA

Year : 2018 & 2021

Client : Drive Hospitality

Lighting Featured : Hemi Large Pendants

Hemi Medium Pendants

Hemi Small Pendants

Blue Park Kitchen brings healthful ingredients and responsibly sourced products to New York City's fast paced dining scene. Their ethos transcends food into cultivating an ambiance that also reflects their values, with sustainably sourced and locally grown lighting fixtures derived from mycelium, the roots of mushrooms.

Blue Park opened its second location three years after its flagship restaurant. Together with Drive Hospitality, MushLume Lighting explored playing with color by dipping the edges of the lampshades in Blue Park's iconic bright blue hue to create a unique expression for their midtown eatery.





## BLUE PARK KITCHEN



Image : Danielle Trofe Design, LLC



## LALOU WINE BAR

Location : Brooklyn, NY | USA

Year : 2019

Designer : Nico Arze

Lighting Featured : Hemi Large Pendants

Cup Small Sconces



Located in Prospect Heights, Brooklyn, LaLou Wine Bar touts not only sustainably sourced wines and fare, but also an interior that reflects their values of natural and locally sourced. Pendants and wall sconces grown from mushroom mycelium illuminate the airy ambiance.

# 04.



Images : LaLou Wine Bar

# 05.



## EAST FORK STORES

Location : Asheville, NC & Atlanta, GA | USA

Year : 2020

Client : East Fork, LLC

Lighting Featured : Hemi Large Pendants

When the stars align, so too, do core values. We found our Hemi Pendants to be a natural fit in the East Fork brick-and-mortar storefronts in Asheville and Atlanta.

East Fork is a certified B Corporation committed to making the most beautiful, functional and long-lasting pottery out there, while treating each other and the community with kindness and respect.







Images : East Fork, LLC

## CALYCO SHOP

Location : Clayton, NC | USA

Year : 2022

Client : Calyco Interior Designs

Lighting Featured : Hemi Large Pendants

Hemi Medium Pendants

Hemi Small Pendants

Cup Large Pendants

Cup Small Pendants

When Calyco Interior Designs decided to open a brick-and-mortar shop at their headquarters in North Carolina, a MushLume Lighting installation was at the forefront of their conceptualization of the space. The cloud of different sized shades grown from mushroom mycelium create a soft, yet dramatic effect against the dark ceiling in the building's entryway.

Calyco is a residential & commercial design company specializes in design renovations and whole room furniture installations.





Images : Calyco Interior Desings

06.





# 07.

## HASKILL CREEK FARMS

Location : Whitefish, MT | USA

Year : 2021

Client : Mixture Design Co.

Lighting Featured : Hemi Large Pendants

Hemi Medium Pendants

Single Sconces

Focusing on quality, social and environmentally conscious products across the categories of self care, home and lifestyle, Haskill Creek Farms delivers on design as well. MushLume pendants and sconces are speckled throughout the interior of this renovated farm house that is layered in textures and soft earthy neutrals.



Images : Haskill Creek Farms

# CANNABIS COUNTER

Location : Whitefish, MT | USA

Year : 2021

Client : Mixture Design Co.

Lighting Featured : Trumpet Pendants

Hemi Medium Pendants

Hemi Small Pendants

Cup Light Pendants

Located in Northwest Montana, this cannabis dispensary emphasizes unparalleled quality of organic, clean green certified, cannabis products. Desiring an interior environment that reflected the store's focus on all natural goods, the MushLume Lighting pendants were a perfect match, speckling the hardwood ceiling throughout the space.



Images : Cannabis Counter

# 08







Images : Stem & Glory

Sustainability is a non-negotiable principle by which Stem and Glory aligns its business with. The 100% vegan restaurant is also a carbon neutral business. Needless to say, the MushLume Hemi Pendants were a perfect fit for the interior, providing functional dining room lighting as well as creating an authentic ambiance that reflected the values of the restaurant.





## STEM & GLORY RESTAURANT

Location : Cambridge, UK

Year : 2019

Client : Stem & Glory

Lighting Featured : Hemi Large Pendants

# 09.

# 10.

## NISOLO SHOE STORES

Location : Washington, DC & Boston, MA | USA

Year : 2023

Client : Leap, Inc.

Lighting Featured : Hemi Large Pendants

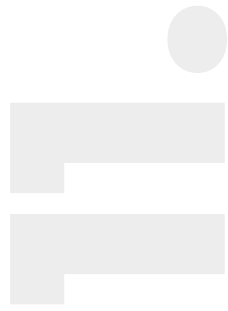
Known for their classic, sustainable shoes and accessories, Nisolo, now features the MushLume Hemi Pendants in two of their stores located in Washington, D.C. and Boston.





Images : Nisolo





## PRESENT TENSE RESTAURANT

Location : Nashville, TN | USA

Year : 2022

Client : Powell Nashville

Lighting Featured : Hemi Large Pendants

In the heart of Nashville, Present Tense's fun and funky atmosphere give the MushLume Hemi Pendants an elevated tropical vibe! With ultra-high ceilings the black hardware and cords draw architectural lines against a muted backdrop, creating a dramatic feel as the eye traces the lampshades journey to hover just over a communal dining table in a cozy corner of the restaurant.



Images : Nashville Guru





Image : Casa Arte Group

## A CURATED COLLECTION

# 01.

## MEDINAH

Location : St. Simon's Island, GA | USA

Year : 2018

Client : Valerie Britz Interiors

Lighting Featured : Hemi Large Pendants  
Hemi Medium Pendants  
Hemi Small Pendants







Valarie Britz Interiors unleashes the elegance of the MushLume Lighting pendants in this residential corridor. Marrying a sleek, classic style with natural and surprising elements including lampshades grown from mushroom mycelium.

Valarie's designs bring a fresh combination of contemporary flavor to a classic style, emphasizing light, scale, and many architectural elements to create an inviting space.

# 02.

## GRASS HOUSE

Location : Washington, DC | USA

Year : 2020

Client : Becker Linn Design

Lighting Featured : Hemi Large Pendants  
Cup Light Pendants

Grass House, an award-winning residential project located in Washington, D.C., is made entirely out of bamboo. Placing sustainability at the forefront of all design decisions, Becker Linn Design selected MushLume Lighting as a natural complement to the tactile interior.





Images : Becker Linn Design



## NEWPORT HEIGHTS

Location : Newport Beach, CA

Year : 2019

Designer : Casa Arte

Lighting Featured : Hemi Large Pendants

Hemi Medium Pendants

Cup Light Pendants



A cluster of MushLume pendants repel down from hardwood beams above a quartz kitchen island in this modern residence in Newport Beach, CA. The soft texture of the mycelium skin creates a unique ambiance of illumination in a space designed to celebrate materiality.

# 03.



Images : Casa Arte Group



Image : Sarah Sherman Samuel

## MULBERRY MODERN

Location : Michigan, USA

Year : 2022

Designer : Sarah Sherman Samuel

Lighting Featured : Hemi Large Pendants

The natural mycelium texture of the MushLume Hemi Pendants complement the stunning marble backdrop to create an elevated kitchen in this Michigan-based home renovation. Featured on Discovery+

# 04.



Images : Becky Shea Design



## UPPER PINES

Location : Catskills, NY | USA

Year : 2021

Designer : Becky Shea Design

Lighting Featured : Cluster Chandelier

# 05.

Planted on a picturesque mountainside in the southern Catskills of New York, this relaxing oasis is home to designer and architect Becky & Jake of Becky Shea Design. With a focus on evoking a sense of calm, the design duo opted to use moody, dark paint hues that spoke to the natural environment mixed with raw materials including deep, rich walnut, leather and black metals throughout the rooms. The effect is that of being in a cozy nest that hugs you and allows you to breathe easier as you unwind. A MushLume Cluster Chandelier hangs over the dining room table bringing textured elegance to an interior that is in touch with its natural surroundings.



Image : Andrew Bui

# 06.



Image : Keel Labs







Image : Becky Shea Design

## A FEW MORE FAVORITES

Location : Brooklyn, NY | USA

Year : 2021

Designer : Lidey Heuck

Lighting Featured : Hemi Large Pendant

Location : Morrisville, NC | USA

Year : 2022

Designer : Keel Labs

Lighting Featured : Hemi Large Pendant

Location : Catskills, NY | USA

Year : 2022

Designer : Becky Shea Design

Lighting Featured : Hemi Medium Pendant

Location : Marin, CA | USA

Year : 2023

Designer : The Still Collective

Lighting Featured : Hemi Large Pendant

Image : The Still Collective



Image : Form & Field



Image : Kristi Bizon



Location : Verdi, NV | USA

Year : 2021

Designer : Form & Field

Lighting Featured : Hemi Large Pendant

Location : Woodburn, OR | USA

Year : 2022

Designer : Kristi Bizon

Lighting Featured : Single Sconces



Image : The Plant Mami

Location : Portland, OR | USA

Year : 2021

Designer : The Plant Mami

Lighting Featured : Trumpet Pendant

Location : Tribeca, NYC | USA

Year : 2021

Designer : KKB Interiors

Lighting Featured : Hemi Medium Pendant



Image : KKB Interiors



Image : Autodesk Portland

Location : Portland, OR | USA  
 Year : 2019

Designer : Autodesk Office

Lighting Featured : Cup Light Table Lamps

Location : Seoul | South Korea  
 Year : 2020

Designer : Letari

Lighting Featured : Hemi Large Pendant

Location : Issaquah, WA | USA  
 Year : 2022

Designer : Karen Delucas Architecture

Lighting Featured : Hemi Pendants  
 Cup Light Pendants

Location : Prague | Czech Republic  
 Year : 2020

Designer : The Italians Wine & Food

Lighting Featured : Hemi Large Pendants



Image : Letari



Image : Karen Delucas Architecture



Image : The Italians





# BROOKLYN-BASED

MushLume Lighting headquarters is located in The Old American Can Factory in Gowanus, Brooklyn, USA. This studio setting allows for a hands-on approach to designing the lighting collection while also designing the production processes needed to achieve the a variety of desired aesthetic outcomes. It's here that we innovate our tooling, natural finishes and explore customizations options for our clients with a small team who maintains a unique skill set and deep knowledge base of working with biomaterials.







Images : Danielle Trofe D&Esign, LLC



## CREATING LEGACY

With over 15 years of research and development, this biomaterial is no longer at an experimental phase. We've proven that biofabricated products are not only a viable consumer good, but at scale, can help to shift an industry into a more resilient and symbiotic future.

The award-winning MushLume Lighting Collection is one of the first successfully commercialized biofabricated products made available in the global market. And the first mycelium-grown lighting collection to be launched within the lighting industry. Our story and products continue to inspire entrepreneurs and designers across the globe to begin their own mycelium journeys. As more and more biodesign companies and biofabricated products emerge on the scene the greater validation and momentum the biodesign movement garners.



Images : Ecovative

## GLOBAL PARTNERSHIPS

It is through close relationships with our suppliers, growers, fulfillment partners and lighting manufacturers that our aspirations of a lighting collection grown from mushroom mycelium is made possible. Both domestically and abroad, we work hand-in-hand with our partners to continuously innovate our designs and production processes in order to bring the highest quality lighting products to the industry. As we expand into new markets, it has been essential to build on our knowledge base and 10 years of experience to help establish the same level of success we have achieved in the United States and beyond. Our goal is to be able to bring the MushLume Lighting collection to as large an audience as possible, learning and collaborating as we grow.



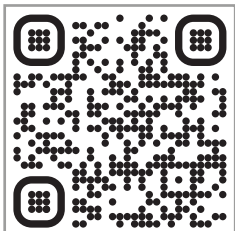
Resiliency in an ecosystem is created through diversity, symbiotic relationships and cooperation. Using nature as our model, we strive to operate with the idea that our partner's success is our own success and will always be reciprocal. At MushLume Lighting we are continuously thankful for the incredible companies that we collaborate with and know that we are all working together to better the planet.





**"FOR THE PAST  
DECADE I'VE HAD THE  
PRIVELEDGE TO WORK  
WITH BIOMATERIALS  
IN AN INTIMATE AND  
COLLABORATIVE WAY,  
HELPING TO CREATE A  
BRIDGE FOR SCIENCE TO  
INFLUENCE DESIGN, AND  
VICE VERSA. IT IS AT THESE  
INTERSECTIONS THAT  
TRUE INNOVATION AND  
CREATIVITY EMERGE."**

DANIELLE TROFE  
BIODESIGNER & BIOMIMICRY SPECIALIST  
FOUNDER OF MUSHLUME LIGHTING



## **CONTACT US**

+1.347.946.2712  
mushlumelighting.com  
info@mushlumelighting.com

## **EUROPE**

mushlumelighting.uk  
mushlumelighting.eu  
Surrey, UK | Heerwaarden, NL